

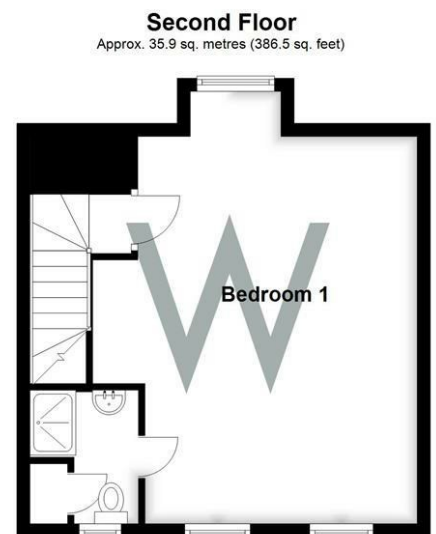
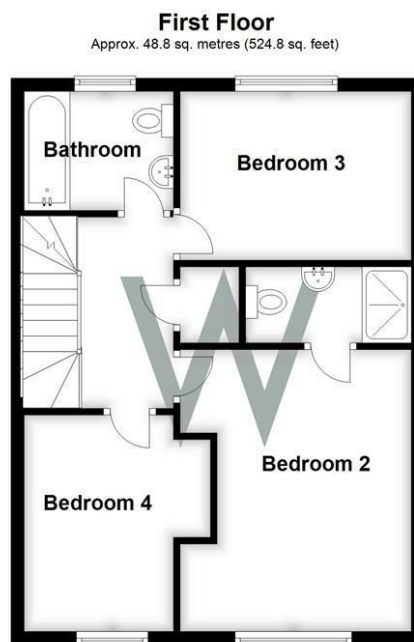
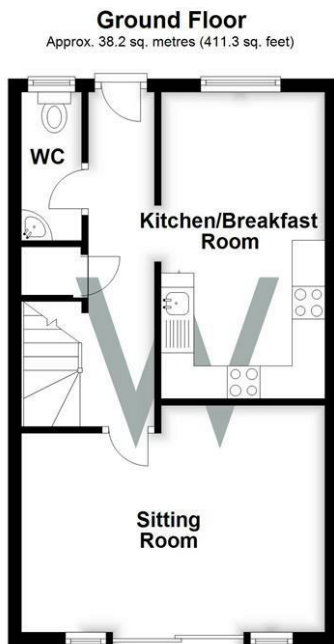


## 45 Bailey Lane, Wilton, Salisbury, Wiltshire, SP2 0FR

A well presented 4 bedroom, three storey house, in popular location, rear patio garden. 2 parking spaces. NO PETS. 6m ONLY CONTRACT

- 6 MONTH ONLY CONTRACT
- KITCHEN WITH INTEGRATED APPLIANCES
- TWO OFF ROAD PARKING SPACES
- PRETTY REAR PATIO GARDEN
- POPULAR RESIDENTIAL AREA OF WILTON
- GAS CENTRAL HEATING
- PVCU DOUBLE GLAZING
- COUNCIL TAX BAND - E
- EPC- B
- NO PETS

**£1,550 Per Calendar Month**



Total area: approx. 122.9 sq. metres (1322.5 sq. feet)


## WHITES

Castle Chambers, 47 Castle Street, Salisbury,  
Wiltshire, SP1 3SP

Tel: 01722 336422/Option 2

[www.hwwhite.co.uk](http://www.hwwhite.co.uk)

email: [lettings-management@hwwhites.co.uk](mailto:lettings-management@hwwhites.co.uk)

Energy Efficiency Rating		Current	Potential
Very energy efficient - lower running costs			
(92 plus) A			95
(81-91) B		85	
(69-80) C			
(55-68) D			
(39-54) E			
(21-38) F			
(1-20) G			
Not energy efficient - higher running costs			
England & Wales		EU Directive 2002/91/EC	

Environmental Impact (CO <sub>2</sub> ) Rating		Current	Potential
Very environmentally friendly - lower CO <sub>2</sub> emissions			
(92 plus) <b>A</b>			
(81-91) <b>B</b>			
(69-80) <b>C</b>			
(55-68) <b>D</b>			
(39-54) <b>E</b>			
(21-38) <b>F</b>			
(1-20) <b>G</b>			
Not environmentally friendly - higher CO <sub>2</sub> emissions			
England & Wales		EU Directive 2002/91/EC	